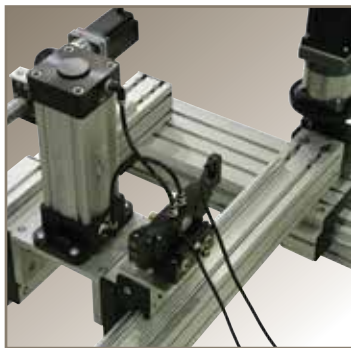




aerospace
climate control
electromechanical
filtration
fluid & gas handling
hydraulics
pneumatics
process control
sealing & shielding



T-Slot Aluminum Framing

Parker Industrial Profile Systems



ENGINEERING YOUR SUCCESS.

T-Slot Aluminum Framing Solutions

Everything You Need to Build *Anything*

Parker's extensive line of structural T-slot aluminum extrusions, fasteners, panels, doors, hardware and accessories can be configured to meet any design challenge with a durable, high performance solution.



Cabinets and Storage



Material Handling Systems



Test Station with Granite Top



Factory Lean Solutions



Front Office Reception Desk



Portable Gantry System



Machine Bases and Frames



Workstations and Tables

NEW!

Factory Lean Solutions

Parker has introduced a series of standard lean factory solutions such as team tracking and communication boards and day by the hour boards using our modular T-slot aluminum framing system. These systems can be ordered as a kit or an assembly.



Service and Support: When, Where & How You Need It

Customer satisfaction is key to your success, and ours. Our nationwide network of IPS service centers and distributors provide the right level of product and engineering expertise and response to support your needs.



Wadsworth, OH



Rohnert Park, CA



IPS Service Centers

- **Plant locations in Wadsworth, OH and Rohnert Park, CA**
- **Parts, accessories and extrusions in stock**
- **Engineering capabilities for kits and assemblies**
- **Machining services: cutting, tapping, drilling and counter boring**
- **Assembly services**
- **Factory direct customer service support**



Authorized Design Centers

- **Locations across the country**
- **Local inventory of most parts, accessories and extrusions**
- **Engineering capabilities for kits and assemblies**
- **Machining Services: cutting, tapping, drilling and counter boring**
- **Assembly services**
- **Factory trained staff**



Authorized Distributors

- **Locations across the country**
- **Local support**
- **Other value added services**
- **Factory trained staff**

Online Tools

www.parker.com/ips



Parker IPS offers the tools needed to design and develop your assembly solution. Use our website for access to the industry's most comprehensive resource for:

- **Complete selection and specification information on all IPS products available on-line in pdf format**
- **Native SolidWorks® and Inventor® 3D CAD files libraries available for download or on USB for all IPS products**
- **Training materials**
- **Support and downloads**
- **Rapid quote requests**
- **Distributor/Design Center Locator**

Avoid paying too much for an over-engineered solution, contact our applications team today at 800.333.4932 for quick response and help with designing the best solution.

SolidWorks® is a registered trademark of Dassault Systemes Solidworks Corp.
Inventor® is a registered trademark of Autodesk Inc.

Think it. Design it. Build it.

From Concept to Completion.

Turn your brainstorm into an application quote in as little as 24 hours – Parker's IPS network can help!

Are other structural aluminum providers unable to provide the right solution? Are you considering using aluminum over traditional welded steel? We can convert pen or pencil sketches into final drawings and quotes, often saving you time and money.

Parker can also supply engineered kits or sub-assemblies to make your next project flow smoothly. Most quotes can be turned around quickly.

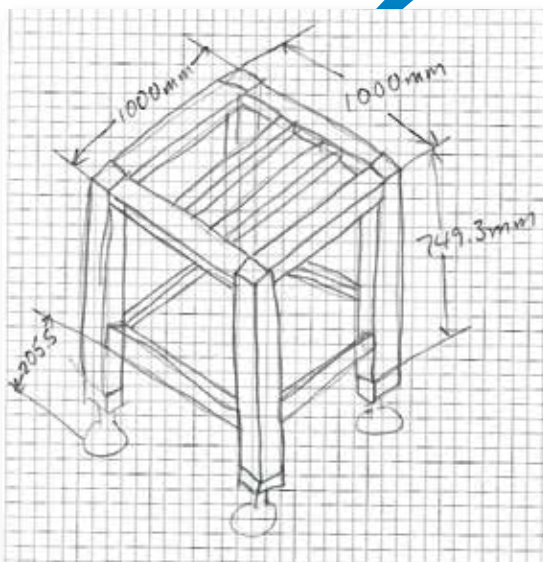
Call **800-333-4932** to discuss your requirements with an applications engineer.

Typical Applications

- Motion systems integration
- Enclosures and guarding
- Machine bases and frames
- Workstations and tables
- Material handling systems
- Lean manufacturing tools
- Clean room applications
- Conveyor frames
- Test equipment
- Tool racks
- Test tables
- Trade show booths
- Store fixtures
- Sound enclosures

Markets Served

- Aerospace
- Automotive
- Educational
- Industrial manufacturing
- Medical
- Packaging
- Pharmaceutical
- Plastics
- Semiconductor
- Textiles
- Tires



Deflection and Stress Calculation Program v2.0.7

1 - Select a profile
10-100 (8x4) Standard

2 - Enter profile length
max 6000 mm
0.000 mm

3 - Define the load
Concentrated Load
50 N
Additional Uniform Load
0 N/m

This program is intended to use as a guide. Selection, performance and safety of products are the sole responsibility of the user for each application. Products, features, specifications, availability, and designs are subject to change without notice.

IPS™
Industrial Profile Systems

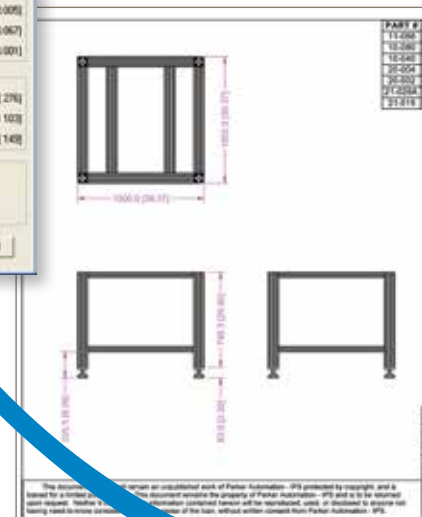
Copyright © 1999-2000, Industrial Profile Systems
800-333-4932 281-693-6100 281-693-4836 fax
www.industrialprofile.com

Profile Properties	
Moment of Inertia, cm ⁴ [in ⁴]	71.87 [1.7291]
Section Modulus, cm ³ [in ³]	17.99 [1.0670]
Profile Weight, kg/m [lb/ft]	3.18 [2.14]

Maximum Deflection at Critical Points, mm [inch]	
Supported at Both Ends	0.03 [0.001]
Fixed at One End	0.41 [0.016]
Fixed at Both Ends	0.01 [0.000]

Maximum Stress at Critical Points, N/mm ² [psi]	
Supported at Both Ends	0.9 [132]
Fixed at One End	3.6 [528]
Fixed at Both Ends	0.5 [71]

Stress Limits, N/mm ² [psi]	
Yield Strength (0.2%), N/mm ² [psi]	240 [35 000]
Factor of Safety (s=1)	1
Allowable Working Stress, N/mm ² [psi]	240 [35 000]



The IPS team of engineers is available to help design systems to ensure perfect field integration. IPS solutions are custom fabricated and shipped installation ready as a kit or complete assembly.



Custom services also available by our expert machinists to meet your exact requirements.

- **Metric and Imperial design catalog**
- **Parker Structural System Designer (PSD) software**
- **Motion system integration**
- **Deflection program**
- **Engineering quotes and drawings**
- **Quick quote software**
- **Assembly manuals**
- **Assemblies, kits and bundles**

Parker Hannifin Corp.
Electromechanical, N.A.

QUOTATION

Quoted
Date: 10/1/84

Particulars
Part Number: 138
Description: Double Drive, Wadsworth, OH 44091

Customer
Customer No.:
Requester:
Phone:
Fax:

Shipping Address

Unit Quoted
1 Unit

Billing Address

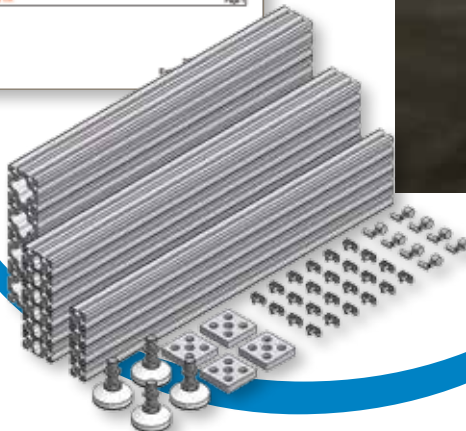
Delivery
Quoted #:
Subsequence:
Customer's Mark:
RFQ or PO #:
Ship Date:
Req'd in House Date:
Ship date:
Project contact point:

SECRET

Part Number	Qty.	Length	UNOM	Description
1 10-088	4	760.3	1000	SPPL BORE-HAVT CLIP
1 10-089	4	840.0	1000	SPPL BORE-210 CLIP
1 10-090	4	840.0	1000	SPPL BORE-210 CLIP
1 10-091	4	--	--	SPPL BORE-210 CLIP
1 10-092	4	--	--	SPPL BORE-210 CLIP
1 10-093	4	--	--	SPPL BORE-210 CLIP
1 10-094	4	--	--	SPPL BORE-210 CLIP
1 10-095	4	--	--	SPPL BORE-210 CLIP
1 10-096	4	--	--	SPPL BORE-210 CLIP
1 10-097	4	--	--	SPPL BORE-210 CLIP
1 10-098	4	--	--	SPPL BORE-210 CLIP
1 10-099	4	--	--	SPPL BORE-210 CLIP
1 10-100	4	--	--	SPPL BORE-210 CLIP
1 10-101	4	--	--	SPPL BORE-210 CLIP
1 10-102	4	--	--	SPPL BORE-210 CLIP
1 10-103	4	--	--	SPPL BORE-210 CLIP
1 10-104	4	--	--	SPPL BORE-210 CLIP
1 10-105	4	--	--	SPPL BORE-210 CLIP
1 10-106	4	--	--	SPPL BORE-210 CLIP
1 10-107	4	--	--	SPPL BORE-210 CLIP
1 10-108	4	--	--	SPPL BORE-210 CLIP
1 10-109	4	--	--	SPPL BORE-210 CLIP
1 10-110	4	--	--	SPPL BORE-210 CLIP
1 10-111	4	--	--	SPPL BORE-210 CLIP
1 10-112	4	--	--	SPPL BORE-210 CLIP
1 10-113	4	--	--	SPPL BORE-210 CLIP
1 10-114	4	--	--	SPPL BORE-210 CLIP
1 10-115	4	--	--	SPPL BORE-210 CLIP
1 10-116	4	--	--	SPPL BORE-210 CLIP
1 10-117	4	--	--	SPPL BORE-210 CLIP
1 10-118	4	--	--	SPPL BORE-210 CLIP
1 10-119	4	--	--	SPPL BORE-210 CLIP
1 10-120	4	--	--	SPPL BORE-210 CLIP
1 10-121	4	--	--	SPPL BORE-210 CLIP
1 10-122	4	--	--	SPPL BORE-210 CLIP
1 10-123	4	--	--	SPPL BORE-210 CLIP
1 10-124	4	--	--	SPPL BORE-210 CLIP
1 10-125	4	--	--	SPPL BORE-210 CLIP
1 10-126	4	--	--	SPPL BORE-210 CLIP
1 10-127	4	--	--	SPPL BORE-210 CLIP
1 10-128	4	--	--	SPPL BORE-210 CLIP
1 10-129	4	--	--	SPPL BORE-210 CLIP
1 10-130	4	--	--	SPPL BORE-210 CLIP
1 10-131	4	--	--	SPPL BORE-210 CLIP
1 10-132	4	--	--	SPPL BORE-210 CLIP
1 10-133	4	--	--	SPPL BORE-210 CLIP
1 10-134	4	--	--	SPPL BORE-210 CLIP
1 10-135	4	--	--	SPPL BORE-210 CLIP
1 10-136	4	--	--	SPPL BORE-210 CLIP
1 10-137	4	--	--	SPPL BORE-210 CLIP
1 10-138	4	--	--	SPPL BORE-210 CLIP
1 10-139	4	--	--	SPPL BORE-210 CLIP
1 10-140	4	--	--	SPPL BORE-210 CLIP
1 10-141	4	--	--	SPPL BORE-210 CLIP
1 10-142	4	--	--	SPPL BORE-210 CLIP
1 10-143	4	--	--	SPPL BORE-210 CLIP
1 10-144	4	--	--	SPPL BORE-210 CLIP
1 10-145	4	--	--	SPPL BORE-210 CLIP
1 10-146	4	--	--	SPPL BORE-210 CLIP
1 10-147	4	--	--	SPPL BORE-210 CLIP
1 10-148	4	--	--	SPPL BORE-210 CLIP
1 10-149	4	--	--	SPPL BORE-210 CLIP
1 10-150	4	--	--	SPPL BORE-210 CLIP
1 10-151	4	--	--	SPPL BORE-210 CLIP
1 10-152	4	--	--	SPPL BORE-210 CLIP
1 10-153	4	--	--	SPPL BORE-210 CLIP
1 10-154	4	--	--	SPPL BORE-210 CLIP
1 10-155	4	--	--	SPPL BORE-210 CLIP
1 10-156	4	--	--	SPPL BORE-210 CLIP
1 10-157	4	--	--	SPPL BORE-210 CLIP
1 10-158	4	--	--	SPPL BORE-210 CLIP
1 10-159	4	--	--	SPPL BORE-210 CLIP
1 10-160	4	--	--	SPPL BORE-210 CLIP
1 10-161	4	--	--	SPPL BORE-210 CLIP
1 10-162	4	--	--	SPPL BORE-210 CLIP
1 10-163	4	--	--	SPPL BORE-210 CLIP
1 10-164	4	--	--	SPPL BORE-210 CLIP
1 10-165	4	--	--	SPPL BORE-210 CLIP
1 10-166	4	--	--	SPPL BORE-210 CLIP
1 10-167	4	--	--	SPPL BORE-210 CLIP
1 10-168	4	--	--	SPPL BORE-210 CLIP
1 10-169	4	--	--	SPPL BORE-210 CLIP
1 10-170	4	--	--	SPPL BORE-210 CLIP
1 10-171	4	--	--	SPPL BORE-210 CLIP
1 10-172	4	--	--	SPPL BORE-210 CLIP
1 10-173	4	--	--	SPPL BORE-210 CLIP
1 10-174	4	--	--	SPPL BORE-210 CLIP
1 10-175	4	--	--	SPPL BORE-210 CLIP
1 10-176	4	--	--	SPPL BORE-210 CLIP
1 10-177	4	--	--	SPPL BORE-210 CLIP
1 10-178	4	--	--	SPPL BORE-210 CLIP
1 10-179	4	--	--	SPPL BORE-210 CLIP
1 10-180	4	--	--	SPPL BORE-210 CLIP
1 10-181	4	--	--	SPPL BORE-210 CLIP
1 10-182	4	--	--	SPPL BORE-210 CLIP
1 10-183	4	--	--	SPPL BORE-210 CLIP
1 10-184	4	--	--	SPPL BORE-210 CLIP
1 10-185	4	--	--	SPPL BORE-210 CLIP
1 10-186	4	--	--	SPPL BORE-210 CLIP
1 10-187	4	--	--	SPPL BORE-210 CLIP
1 10-188	4	--	--	SPPL BORE-210 CLIP
1 10-189	4	--	--	SPPL BORE-210 CLIP
1 10-190	4	--	--	SPPL BORE-210 CLIP
1 10-191	4	--	--	SPPL BORE-210 CLIP
1 10-192	4	--	--	SPPL BORE-210 CLIP
1 10-193	4	--	--	SPPL BORE-210 CLIP
1 10-194	4	--	--	SPPL BORE-210 CLIP
1 10-195	4	--	--	SPPL BORE-210 CLIP
1 10-196	4	--	--	SPPL BORE-210 CLIP
1 10-197	4	--	--	SPPL BORE-210 CLIP
1 10-198	4	--	--	SPPL BORE-210 CLIP
1 10-199	4	--	--	SPPL BORE-210 CLIP
1 10-200	4	--	--	SPPL BORE-210 CLIP

Extended	Unit Price	Sub Total	Unit Price	Sub Total
Ext. Price	Unit Price	Sub Total	Unit Price	Sub Total
10-088	17.25	249.00	48.0	--
10-089	32.12	128.48	144.0	20.27
10-090	32.12	128.48	144.0	20.27
10-091	3.00	12.00	144.0	8.7
10-092	3.00	12.00	144.0	8.7
10-093	3.00	12.00	144.0	8.7
10-094	3.00	12.00	144.0	8.7
10-095	3.00	12.00	144.0	8.7
10-096	3.00	12.00	144.0	8.7
10-097	3.00	12.00	144.0	8.7
10-098	3.00	12.00	144.0	8.7
10-099	3.00	12.00	144.0	8.7
10-100	3.00	12.00	144.0	8.7
10-101	3.00	12.00	144.0	8.7
10-102	3.00	12.00	144.0	8.7
10-103	3.00	12.00	144.0	8.7
10-104	3.00	12.00	144.0	8.7
10-105	3.00	12.00	144.0	8.7
10-106	3.00	12.00	144.0	8.7
10-107	3.00	12.00	144.0	8.7
10-108	3.00	12.00	144.0	8.7
10-109	3.00	12.00	144.0	8.7
10-110	3.00	12.00	144.0	8.7
10-111	3.00	12.00	144.0	8.7
10-112	3.00	12.00	144.0	8.7
10-113	3.00	12.00	144.0	8.7
10-114	3.00	12.00	144.0	8.7
10-115	3.00	12.00	144.0	8.7
10-116	3.00	12.00	144.0	8.7
10-117	3.00	12.00	144.0	8.7
10-118	3.00	12.00	144.0	8.7
10-119	3.00	12.00	144.0	8.7
10-120	3.00	12.00	144.0	8.7
10-121	3.00	12.00	144.0	8.7
10-122	3.00	12.00	144.0	8.7
10-123	3.00	12.00	144.0	8.7
10-124	3.00	12.00	144.0	8.7
10-125	3.00	12.00	144.0	8.7
10-126	3.00	12.00	144.0	8.7
10-127	3.00	12.00	144.0	8.7
10-128	3.00	12.00	144.0	8.7
10-129	3.00	12.00	144.0	8.7
10-130	3.00	12.00	144.0	8.7
10-131	3.00	12.00	144.0	8.7
10-132	3.00	12.00	144.0	8.7
10-133	3.00	12.00	144.0	8.7
10-134	3.00	12.00	144.0	8.7
10-135	3.00	12.00	144.0	8.7
10-136	3.00	12.00	144.0	8.7
10-137	3.00	12.00	144.0	8.7
10-138	3.00	12.00	144.0	8.7
10-139	3.00	12.00	144.0	8.7
10-140	3.00	12.00	144.0	8.7
10-141	3.00	12.00	144.0	8.7
10-142	3.00	12.00	144.0	8.7
10-143	3.00	12.00	144.0	8.7
10-144	3.00	12.00	144.0	8.7
10-145	3.00	12.00	144.0	8.7
10-146	3.00	12.00	144.0	8.7
10-147	3.00	12.00	144.0	8.7
10-148	3.00	12.00	144.0	8.7
10-149	3.00	12.00	144.0	8.7
10-150	3.00	12.00	144.0	8.7
10-151	3.00	12.00	144.0	8.7
10-152	3.00	12.00	144.0	8.7
10-153	3.00	12.00	144.0	8.7
10-154	3.00	12.00	144.0	8.7
10-155	3.00	12.00	144.0	8.7
10-156	3.00	12.00	144.0	8.7
10-157	3.00	12.00	144.0	8.7
10-158	3.00	12.00	144.0	8.7
10-159	3.00	12.00	144.0	8.7
10-160	3.00	12.00	144.0	8.7
10-161	3.00	12.00	144.0	8.7
10-162	3.00	12.00	144.0	8.7
10-163	3.00	12.00	144.0	8.7
10-164	3.00	12.00	144.0	8.7
10-165	3.00	12.00	144.0	8.7
10-166	3.00	12.00	144.0	8.7
10-167	3.00	12.00	144.0	8.7
10-168	3.00	12.00	144.0	8.7
10-169	3.00	12.00	144.0	8.7
10-170	3.00	12.00	144.0	8.7
10-171	3.00	12.00	144.0	8.7
10-172	3.00	12.00	144.0	8.7
10-173	3.00	12.00	144.0	8.7
10-174	3.00	12.00	144.0	8.7
10-175	3.00	12.00	144.0	8.7
10-176	3.00	12.00	144.0	8.7
10-177	3.00	12.00	144.0	8.7
10-178	3.00	12.00	144.0	8.7
10-179	3.00	12.00	144.0	8.7
10-180	3.00	12.00	144.0	8.7
10-181	3.00	12.00	144.0	8.7
10-182	3.00	12.00	144.0	8.7
10-183	3.00	12.00	144.0	8.7
10-184	3.00	12.00	144.0	8.7
10-185	3.00	12.00	144.0	8.7
10-186	3.00	12.00	144.0	8.7
10-187	3.00	12.00	144.0	8.7
10-188	3.00	12.00	144.0	8.7
10-189	3.00	12.00	144.0	8.7
10-190	3.00	12.00	144.0	8.7
10-191	3.00	12.00	144.0	8.7
10-192	3.00	12.00	144.0	8.7
10-193	3.00	12.00	144.0	8.7
10-194	3.00	12.00	144.0	8.7
10-195	3.00	12.00	144.0	8.7
10-196	3.00	12.00	144.0	8.7
10-197	3.00	12.00	144.0	8.7
10-198	3.00	12.00	144.0	8.7
10-199	3.00	12.00	144.0	8.7
10-200	3.00	12.00	144.0	8.7

Notes
--
--
--
--
--
--
--
--
--
--
--
--
--
--
--
--
--
--
--
--
--
--
--
--
--
--
--
--
--
--
--
--
--
--
--



Build Smart with T-Slot Aluminum Framing

Parker IPS materials can create an unlimited variety of machine bases and frames, linear-slide systems, safety guarding, enclosures, worktables, material handling systems, and other industrial structures. Innovative customers use our IPS technology as the foundation for systems that feature industry-leading Parker motion control solutions.

Think Aluminum

Aluminum framing offers numerous benefits over typical welded steel fabrication.

- **Extremely short turnaround time from design to completion**
- **No welding, grinding, cleaning, painting, or distortions**
- **Eliminates costly traditional manufacturing processes**
- **Flexibility to re-configure as requirements change**
- **Lighter**

Profiles

Parker offers a comprehensive offering of metric and inch based profiles:

- **100+ individual high-strength aluminum profiles**
- **All structural profiles are aircraft grade, high strength, mill-certified with metallurgical properties of 6105-T5**
- **Aesthetically appealing extrusions offer best-in-class rigidity, durability, and hardness**
- **Unique T-slot design for reliable connection and easy modification**
- **Metric sizes range from 20 mm to 160 mm; inch sizes range from 1" to 6"**
- **Extensive range of smooth, grooveless profiles**



Lean Solutions

- **Improve your Quality and Lean journey**
- **Tracking and Communication, Day by the Hour boards and more!**
- **Pre-configured, standard part numbers**

Fasteners & Accessories

- **T-slots, end caps, fasteners, and covers**
- **Gussets, plates and brackets**
- **Handles and hinges**
- **Panels, sliding doors and gate hardware**
- **Feet and casters**
- **Work station accessories**
- **Slide blocks and bushings**
- **Rollers and slide bearings**
- **Belt and pulley assemblies**



Panels and Wire Mesh

Panels and wire mesh are available in full sheets or to specified cut-to-size dimensions. Standard panel choices include:

- **Lexan®**
- **Trespa®**
- **Expanded PVC**
- **PVC coated wire mesh**
- **Aluminum composite**

Specialty panels of any material can be ordered for any project.

Machining Services

Standard machining options include cutting, tapping, drilling, and counter boring. Additional custom machining by our expert machinists ensure that your design is complete and to your exact requirements.

Choose What Suits Your Needs

Choose a level of service to suit your needs from a completely assembled structure to a bundle of uncut profiles:

Assemblies



Parker IPS offers complete assembled solutions that are designed, custom fabricated, and shipped in as little as seven business days. (Lead times may vary and are application dependent.)

Kits



Profiles are cut and machined to order, fasteners and accessories are included based on a parts list, and the entire order is packaged and shipped for final assembly at your location.

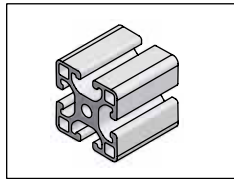
Bundles



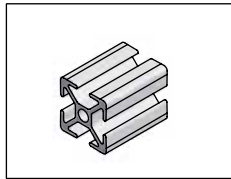
Our entire product line can be ordered as bundles of uncut or cut-to-length profiles, with packages of fasteners and accessories.

ing Components

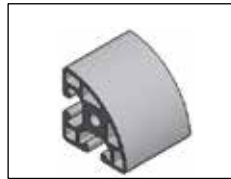
Profiles



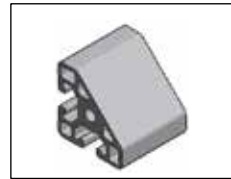
40, 30, 28, 20 Series
Metric



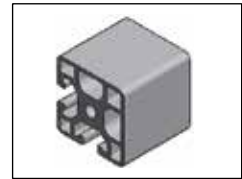
1.5", 1" Series
English



1/4 Round Profiles
30, 40, 1.5" Series



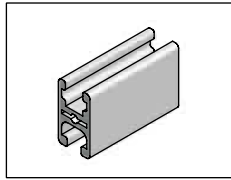
Angled Profiles
28, 40 Series



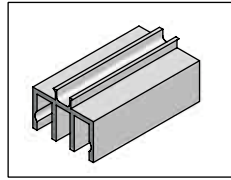
Closed Face Profiles
40, 30, 28, 20, 1.5" Series



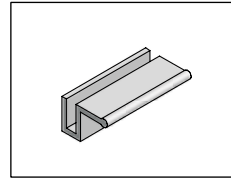
Radius Profiles
40 Series



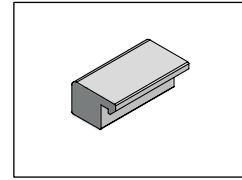
32x18 Frame Profile



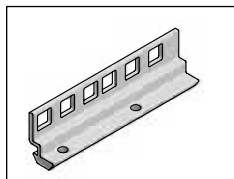
Door Guide Profiles



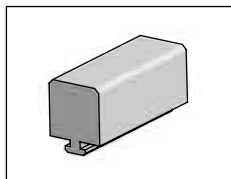
Panel Profiles



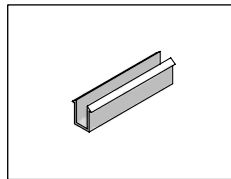
Clamp Profiles



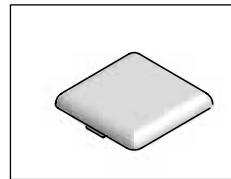
Rack Angle Profiles



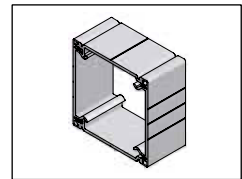
UHMW Profiles



Gaskets,
Profile Covers

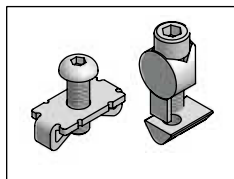


End Caps

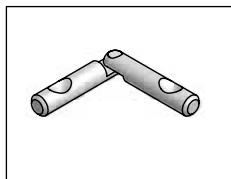


Conduit Profiles

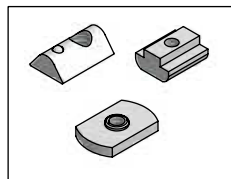
Fasteners



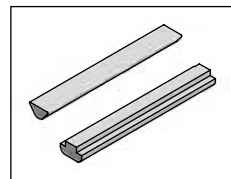
Fasteners



Miter Connectors



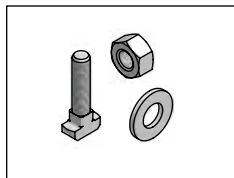
T-Nuts



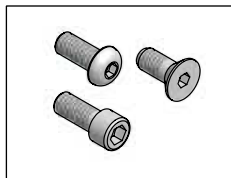
T-Slot Bars



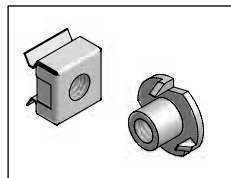
Anodize Breaker



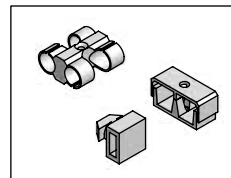
Bolts, Nuts
& Washers



Screws



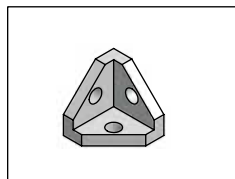
Clip & High Cycle
Nuts



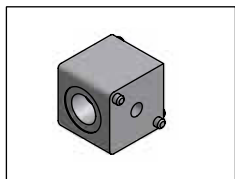
T-Clips &
Cable Holders

Modular Framing Components

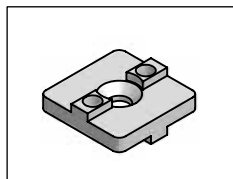
Brackets, Gussets & Plates



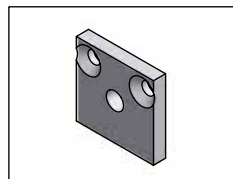
Corner Brackets



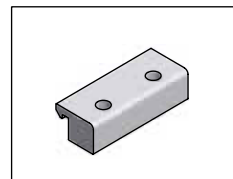
Corner Connectors



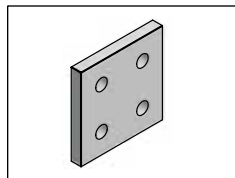
Profile Connectors



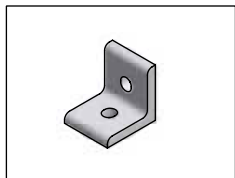
Mounting Plate



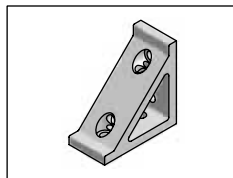
Clamp Block



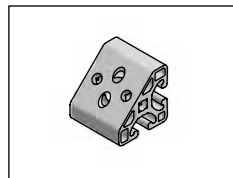
Joining Plates



Angle Brackets

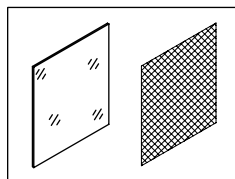


Gussets

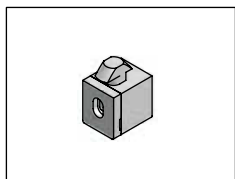


Corner Elements

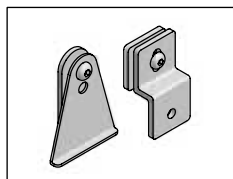
Panels & Doors



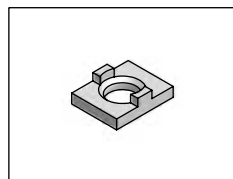
Panels & Wire Mesh



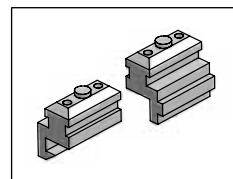
Panel Mounting
Blocks



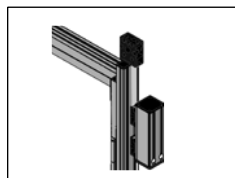
Mesh Retainers



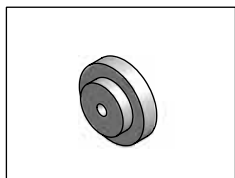
Bifold Door Glide



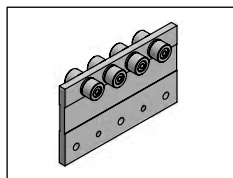
Sliding Doors



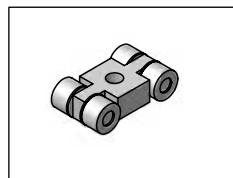
Door Guide System



Rollers

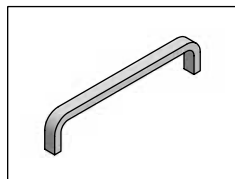


Rail Carts

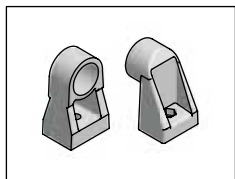


Roller Carts

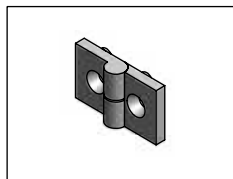
Handles, Hinges & Safety Switches



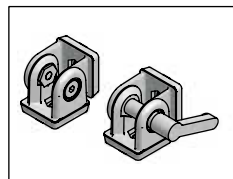
Handles



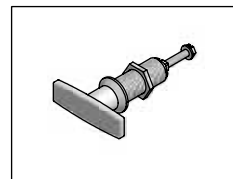
Tube Handle
Supports



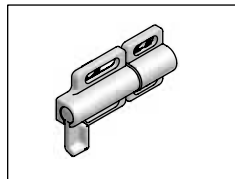
Hinges



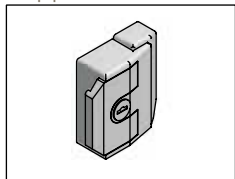
Pivot Joints



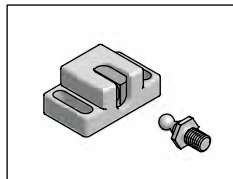
Quarter Turn
Latches



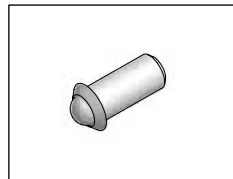
Deadbolt



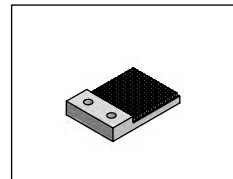
Slam Latch



Door Catches

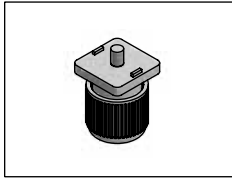


Ball Plungers

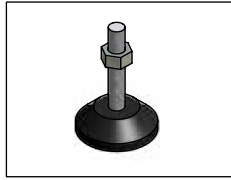


Door Stops

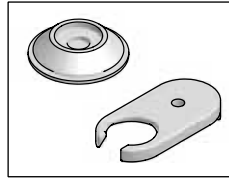
Feet & Casters



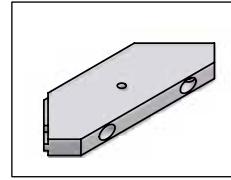
Leveling Feet



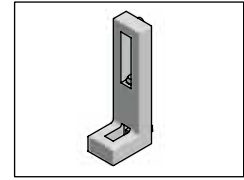
Knuckle Feet



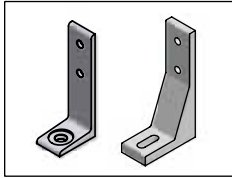
Foot Accessories



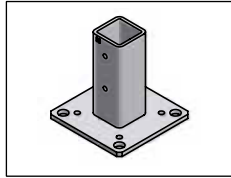
Corner Mounting
Plate



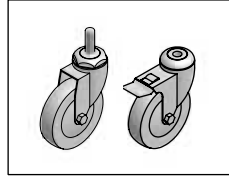
L-Base Leveler/
Anchor



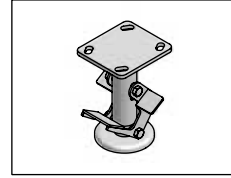
Floor Brackets



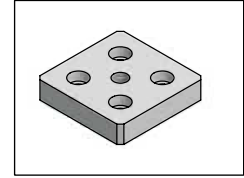
Flange Feet



Casters

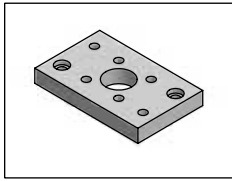


Floor Lock

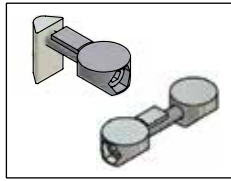


Base Plates

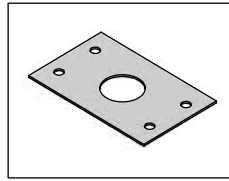
Pre-Designed Solutions



Pneumatic Plates



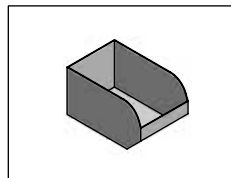
Pneumatic Fasteners



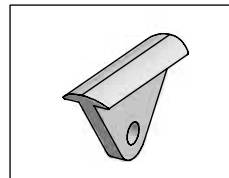
Pneumatic Seals



Lift Systems

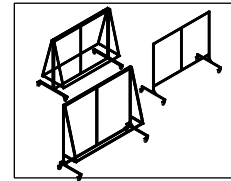


Workstations

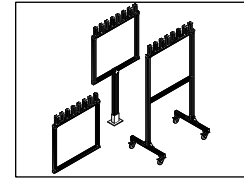


Tool Runners

Factory Lean Tools

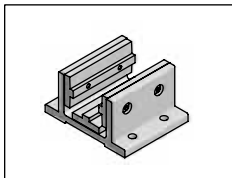


Tracking and
Communication
Stands

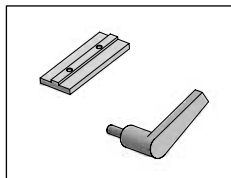


Day by Hour
Stands

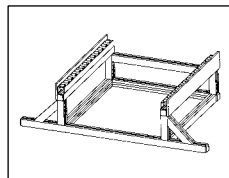
Linear Applications



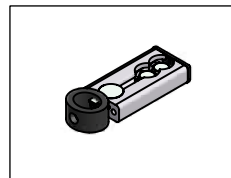
Slide Blocks



Block Accessories

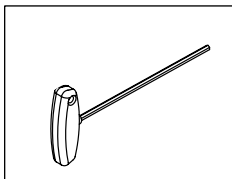


Roller Track

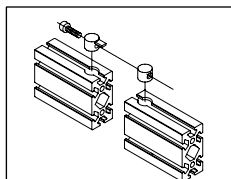


System
Components

Services, Assembly Tips & Tools



Tools



Machining Services

Complete Design Solutions

For the factory floor...



...& the front office!



***Put our Product, Market
& Application Experience
To Work for You***

IPS Solutions at Work:

Cardboard Storage

Before...



A valve manufacturing plant was looking to update their cardboard storage area. Throughout the day the shippers had to do a lot of bending and other tasks that were not ergonomically friendly.

After...



The valve manufacturer was able to use IPS to make the cardboard storage area more visually aesthetic, modular and ergonomically friendly. *This contributed to approximately 125,000 sq. ft. of reclaimed manufacturing floor space!*

Maintenance Workstations

Before...



This Maintenance Department was in need of a way to organize tools and make them accessible. They also needed a dedicated work area that was clear of clutter, in which to work.

After...



By using Parker's T-Slot Aluminum Framing to revamp the maintenance area, the Maintenance Department was able to have a modular and more organized work space. *This improvement added to the overall plant productivity by roughly 14%.*

Steel Enclosure Replacement

Before...



A customer in the paper industry was looking to retrofit the steel enclosures around their machines. Steel has its benefits, but from a weight, modularity and flexibility standpoint, the customer felt it was time to upgrade and came to Parker IPS for assistance.

After...



With the Parker IPS redesign, the customer was able to completely retrofit the heavy steel framing with light weight, but equally strong and durable aluminum. Pneumatic cylinders replaced the hydraulic cylinders to lift the enclosures, resulting in an added cost reduction. The line of sight for the machines was also greatly improved adding to the success of the plant upgrade.

Other Products from Parker...

Electromechanical Solutions

HMI and Controllers



Superior integration and support for machine control as well as HMI hardware and software.

www.parkermotion.com/globalpac

Or go to:

www.parkermotion.com/hmi

Electric Actuators



Screw, belt-driven, and linear motor actuators for the complete range of industrial applications, offering precise motion and flexibility.

www.parkermotion.com/eth

Motors and Drives



Parker's family of innovative servo/stepper motors and drives continues to expand to meet the challenges of new technologies.

www.parkermotion.com/ipa

Or go to:

www.parkermotion.com/motor

Gearheads



Parker offers a full line of in-line and right angle planetary gearheads, multi-drive NEMA gearheads, and integral gearmotors.

www.parker.com/gearheads

Pneumatic Solutions

Linear Actuator



Aluminum and steel pneumatic cylinders, guided cylinders, rodless cylinders, and short stroke thrusters from the industry leader.

www.parker.com/pneu/linear

Rotary Actuators



Industry leader in the design and manufacture of pneumatic rack and pinion, and vane-style rotary actuators.

www.parker.com/pneu/rotary

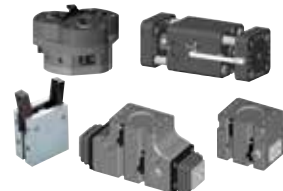
Vacuum Products and Sensors



Vacuum solutions include a broad range of generators (integrated/inline), cups, and pressure sensors.

www.parker.com/pneu/vacsen

Grippers



Parallel, angular, and three jaw grippers are available in over 1,000 configurations.

www.parker.com/pneu/grippers

Airline Accessories



Airline accessories include silencers, flow controls, and mufflers to round out Parker's pneumatic solution.

www.parker.com/pneu/accessories

Air Control Valves



Valve technology that meets the most demanding requirements in any industrial application.

www.parker.com/pneu/valve

Air Preparation



Parker, the industry leader in air preparation, offers a complete line of products to ensure clean, dry, oil-free air.

www.parker.com/pneu/airprep

Connectors and Tubing



The most complete line of fluid connectors worldwide will meet virtually any automation application.

www.parker.com/parflex

