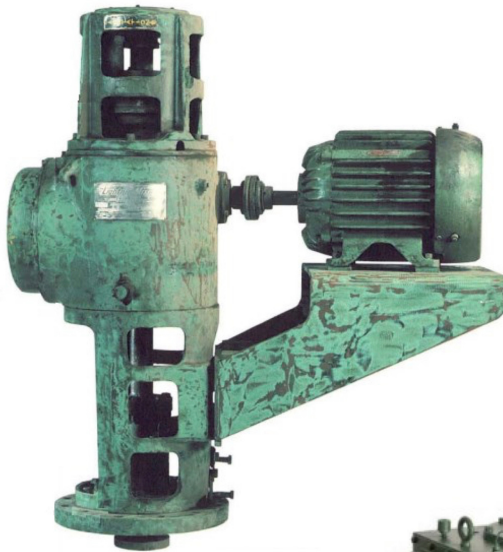


# SPX<sup>®</sup>FLOW

## Conversion Mixer eXchange (CMX)

Drive end replacement for failing, obsolete or competitor geardrives with a current Lightnin geardrive. Each unit is custom engineered as a drop in replacement to the existing installation which re-uses motor, sealing device, and in-tank components as condition allows.



### CUSTOMER VALUE

- . Reduced downtime
- . Drop-in upgrade
- . Increased Reliability
- . Parts & Exchanges readily available
- . Can be supplied on a breakdown basis



INSTALLATION & COMMISSIONING



MAINTENANCE



REFURB & RECONDITIONING



ORIGINAL SPARE PARTS



BREAKDOWN SUPPORT

>Lightnin >Plenty<sup>®</sup>

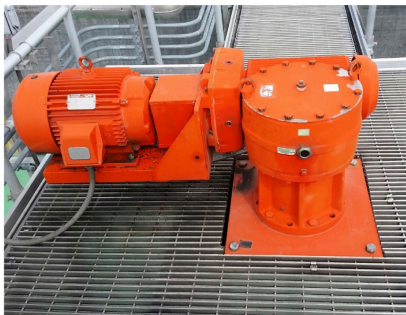


Lightnin Distributor | [CentroSolves.com](http://CentroSolves.com)  
Gary Prescott - Process Equipment & Sanitary Division Sales Manager  
(901) 357-1261 | [gprescott@centrosolves.com](mailto:gprescott@centrosolves.com)

# SPXFLOW

## Conversion Mixer eXchange (CMX)

A Midwest industrial customer contacted SPXFLOW about a competitor gearbox installation that was requiring excessive maintenance. Annual rebuild and replacements were stripping valuable dollars and man-hours from the maintenance budget. Lightnin engineered a drop-in replacement CMX to get the unit back online and within the customers timeframe.



Competitors failing gearbox



Lightnin CMX prior to commissioning

### Before: Customer Problem

- . Repeatable failures requiring gearbox repair or replacement annually
- . High maintenance costs
- . Excessive downtime

### After: SPXFLOW Value

- . Gearbox replacement re-using existing shaft and impellers to minimize installed cost
- . Prolonged life with gearbox designed for application
- . Reduction in annual maintenance costs
- . Parts and exchanges readily available



INSTALLATION & COMMISSIONING



MAINTENANCE



REFURB & RECONDITIONING



ORIGINAL SPARE PARTS



BREAKDOWN SUPPORT

>Lightnin >Plenty®



Lightnin Distributor | CentroSolves.com  
Gary Prescott - Process Equipment & Sanitary Division Sales Manager  
(901) 357-1261 | gprescott@centrosolves.com

# SPXFLOW

## Exchange Gearbox Program

Exchange services allow customers to get a remanufactured gearbox for a fraction of the cost of new. Gearboxes are rebuilt to like-new condition and are held to original manufacturing standards and tolerances and carry the same warranty as new. Emergency breakdown deliveries can be available in 24-48 hrs.



### CUSTOMER VALUE

- . Reduce down time
- . Reduce costly production losses
- . Reduce parts inventory
- . Reduce annual operating expenses
- . Reduce total cost of ownership
- . Large selection of gearbox cores ready for final assembly
- . Full OEM warranty



INSTALLATION & COMMISSIONING



MAINTENANCE



REFURB & RECONDITIONING



ORIGINAL SPARE PARTS



BREAKDOWN SUPPORT

>Lightnin >Plenty®

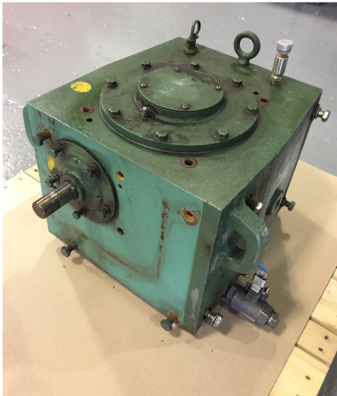


Lightnin Distributor | CentroSolves.com  
Gary Prescott - Process Equipment & Sanitary Division Sales Manager  
(901) 357-1261 | gprescott@centrosolves.com

# SPXFLOW

## Exchange Gearbox Program

A northeast paper company, contacted SPXFLOW about a gearbox failure which shut their production down completely. SPXFLOW Northeast Service Center responded and assembled a remanufactured gearbox the same day. Customers production was returned to service within 48 hours.



### Before: Customer Problem

- . Gearbox Failure - Forced Shutdown
- . Substantial production losses
- . No inventory
- . Reduced maintenance budget



### In Process

- . Returned cores are disassembled & cleaned
- . New gearbox internals are pulled from our expansive inventory
- . Gearbox is assembled to customer required reduction ratio
- . Each gearbox is then spin tested in our service center



### After: SPXFLOW Value

- . Gearbox cores in inventory
- . Emergency response delivery
- . Cost effective alternative to new gearbox
- . New equipment warranty



INSTALLATION & COMMISSIONING



MAINTENANCE



REFURB & RECONDITIONING



ORIGINAL SPARE PARTS



BREAKDOWN SUPPORT

>Lightnin >Plenty®



# SPXFLOW

## Field Service

SPXFLOW offers the full spectrum of on site field services from pre-installation planning through complete lifecycle across the globe.

### Field Services:

- . Failure Recovery
- . Capital installation and commissioning
- . Equipment inspection
- . Condition monitoring
- . Maintenance supervision
- . On-site rebuilds
- . Equipment and inventory audits
- . Extended warranties
- . Troubleshooting
- . Preventive maintenance



### Value:

- . Experienced technicians leading jobsite labor force
- . Reduced outage windows
- . Reduce installed cost
- . Reduce total cost of ownership
- . Prevent forced downtime



INSTALLATION & COMMISSIONING



MAINTENANCE



REFURB & RECONDITIONING



ORIGINAL SPARE PARTS



BREAKDOWN SUPPORT

> Lightnin > Plenty®



Lightnin Distributor | CentroSolves.com  
Gary Prescott - Process Equipment & Sanitary Division Sales Manager  
(901) 357-1261 | gprescott@centrosolves.com

# SPXFLOW

## Field Service

Our trained Field Service Technicians are available to undertake on site supervision or to carry out inspection and maintenance to compliment the jobsite workforce serving all markets.



Chemical—Tank & Agitator Installation



Bio-Pharm - Commissioning



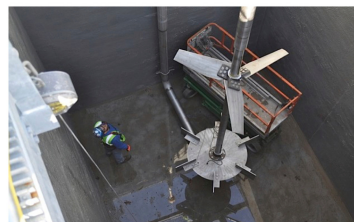
Water Treatment - Staging for installation



Chemical—Steady bearing inspection



Chemical—Original Equipment Site Erection



Water Treatment—Shaft & Impeller Replacement



Mining—SX Impeller retrofit



INSTALLATION & COMMISSIONING



MAINTENANCE



REFURB & RECONDITIONING



ORIGINAL SPARE PARTS



BREAKDOWN SUPPORT

>Lightnin >Plenty®



Lightnin Distributor | [CentroSolves.com](http://CentroSolves.com)  
Gary Prescott - Process Equipment & Sanitary Division Sales Manager  
(901) 357-1261 | [gprescott@centrosolves.com](mailto:gprescott@centrosolves.com)

# SPXFLOW

## Service Center

SPXFLOW offers a full line of parts, inspection, repair, and refurbishment services to keep your agitators running. Mixer Fixer kits are available for most models, and contain all of the critical wear parts for fast repairs. Our Service Technicians disassemble, fully inspect, and generate a detailed inspection report for every rebuild.



Gear Contact Inspection

### Value:

- . Experienced Service Technicians
- . Repairs guaranteed to OEM specifications
- . Genuine OEM parts
- . Cost effective repair vs. replacement
- . Reduce downtime
- . Reduce total cost of ownership
- . Prevent forced downtime.
- . Full OEM warranty



Sample Inspection Report



Cartridge Seal Rebuild



INSTALLATION & COMMISSIONING



MAINTENANCE



REFURB & RECONDITIONING



ORIGINAL SPARE PARTS



BREAKDOWN SUPPORT

>Lightnin >Plenty®



# SPXFLOW

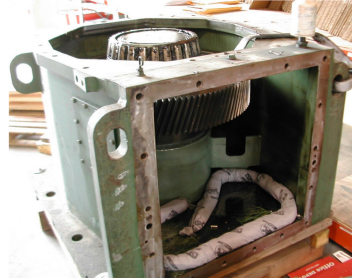
## Service Center

Factory trained Service Technicians conduct all facets of agitator inspection and repair from gearboxes to impellers.



### Before: Customer Problem

- WWT customer with 16 aerator gearboxes to maintain
- Reduced maintenance budget
- Must keep 14 aerators in service at one time
- Units have been in service for 30 years and are showing signs of wear



### In Progress:

- Each gearbox and independent bearing member are disassembled
- Complete inspection and submittal of detailed report with recommended repair scope.



### After: SPXFLOW Value

- Customer receives refurbished unit with full warranty
- Phased rebuild program allows 14 aerators to remain in service
- Fraction of cost of new reducers
- Shorter rebuild cycle than procuring new gearboxes



### Before: Customer Problem

- Chemical customer with critical high alloy wetted parts in an aggressive corrosive application
- Multiple units that require regular maintenance due to the application



### In Progress

- NDE of all welds
- Full dimensional check of all critical tolerances
- Detailed inspection report



### After: SPXFLOW Value

- Expertise in specialty alloy welding and machining
- Repaired for a fraction of the cost of new.
- Material and workmanship carry a new equipment warranty



INSTALLATION & COMMISSIONING



MAINTENANCE



REFURB & RECONDITIONING



ORIGINAL SPARE PARTS



BREAKDOWN SUPPORT

>Lightnin >Plenty®



Lightnin Distributor | CentroSolves.com  
Gary Prescott - Process Equipment & Sanitary Division Sales Manager  
(901) 357-1261 | gprescott@centrosolves.com





**OUR MISSION IS TO BE REGARDED BY OUR CUSTOMERS AND COMMUNITY AS THE  
BEST SUPPLIER OF AUTOMATION AND CONTROL PRODUCT SOLUTIONS TO INDUSTRY**

## **CORPORATE OFFICE AND DISTRIBUTION CENTER**

---

3315 Overton Crossing  
Memphis, TN 38127-6545  
901-357-1261 | Fax 901-357-1379

## **CENTRO BRANCHES**

---

### ***FORMERLY MACHINE AUTOMATION***

320 Nancy Lynn Lane, Suite 7  
Knoxville, TN 37919  
865-588-7473 | Fax 865-588-8861

6800 Bert Kouns Industrial Loop  
Shreveport, LA 71129-4703  
318-221-2347 | Fax 318-227-1927

321 Hill Avenue  
Nashville, TN 37210-3550  
615-255-2220 | Fax 615-255-2212

3794 Abigail Drive  
Theodore, AL 36582-5268  
251-626-0100 | Fax 251-626-0310

### ***FORMERLY ADVANCED INDUSTRY SOLUTIONS***

6400 Shelby View Drive, Suite 110  
Memphis, TN 38134  
901-383-9744 | 800-477-9292 | Fax 901-383-8369

7600 Hardin Drive  
Little Rock, AR 72117-1603  
501-835-2193 | Fax 501-835-2277

102 Ashley Lane  
El Dorado, AR 71730-8373  
870-881-8383 | Fax 870-881-8400

2423 1st Avenue South  
Irondale, AL 35210-1539  
205-703-9810 | Fax 205-703-9811